



**NATIONAL**   
**DISPATCHING**

**Your One-Stop Solution for Construction  
Procurement & Dispatching.**

# Table of Contents

- About Us ..... 2
- Our Mission and Vision ..... 3
- Our Culture ..... 4
- Procurement & Dispatching  
Services for Construction  
Contractors ..... 5
- Our Services ..... 7
  - Rentals
  - Materials
- Our Strength ..... 11
- Our Affiliation & Certification ..... 12
- Why to Choose Us ..... 14
- Voice of Confidence ..... 16
- Operational Zones ..... 17
- Contact Us ..... 18



# About Us

National Dispatching, established in 2010, is headquartered in Fresno, California. We are a trusted provider of heavy equipment rentals and construction materials, serving clients nationwide. Our founders bring extensive experience in operating heavy machinery and managing construction projects. They have firsthand experience with the challenges companies face in sourcing and procuring the right types of equipment and materials required for construction projects. Our company was founded with a particular focus on streamlining procurement and dispatching, saving both cost and time, and optimizing construction projects to their fullest efficiency.

We assist contractors of all sizes in acquiring equipment customized to their project requirements, simplifying the procurement process. Leveraging our extensive network of over 5000 local partners across the nation, we ensure easy procurement at the best prices.

By eliminating the hassle of dealing with multiple vendors, National Dispatching serves as a single, reliable source for all equipment and material needs. Our logistics and dispatching services ensure that equipment and materials are delivered on time, optimizing both schedules and budgets.

At National Dispatching, we act as an extension of your team, taking care of all administrative tasks related to equipment rental, material procurement, and dispatching. Our goal is to streamline your operations, allowing you to concentrate on completing projects and driving your business toward greater success.



# Our Mission and Vision

## Mission

To provide unparalleled procurement and dispatching services, ensuring our clients achieve maximum efficiency and productivity on every project.

## Vision

To be the leading provider of procurement and dispatching solutions, recognized for our commitment to excellence, innovation, and customer satisfaction.



# Our Culture

At National Dispatching, we foster a culture that prioritizes excellence. Our team is dedicated to continuous improvement and exceeding expectations. We believe in working collaboratively and learning from one another, ensuring the best possible outcomes for our clients.

## Performance

Leveraging our experience and expertise, we strive to deliver exceptional results, consistently exceeding the expectations of our clients.

## Humility

Embracing open communication and collaboration, we listen closely to the needs of our clients, working as an extension of their team.

## Dedication

Demonstrating unwavering commitment to the success of our clients' projects, they can rely on us to handle every aspect of procurement and dispatching efficiently and timely.



# Procurement & Dispatching Services for Construction Contractors

Our team tailors procurement and dispatching services to meet the unique needs of construction contractors. Understanding the challenges of equipment and material sourcing and delivery coordination, we expertly streamline the process. We seamlessly integrate with clients' projects, sourcing high-quality equipment and materials and managing logistics to ensure success. With our efficient solutions, contractors can focus on their core tasks, confident that we expertly manage their procurement and dispatching needs.



## Time Efficiency

Our streamlined procurement and dispatching process saves clients valuable time by ensuring prompt delivery of materials and equipment to project sites, minimizing downtime and keeping projects on schedule.



## Cost Savings

Clients benefit from cost savings through our expertise in sourcing high-quality materials at competitive prices. Additionally, our efficient logistics management minimizes unnecessary expenses associated with delays or inefficiencies in the supply chain.



## Seamless Integration

We seamlessly integrate with clients' projects, serving as an extension of their team and working closely to ensure smooth operations and project success.



## Optimized Resource Allocation

By entrusting procurement and dispatching to our team, clients can allocate their resources more effectively. They can redirect manpower and financial resources towards core project activities, maximizing productivity and profitability.



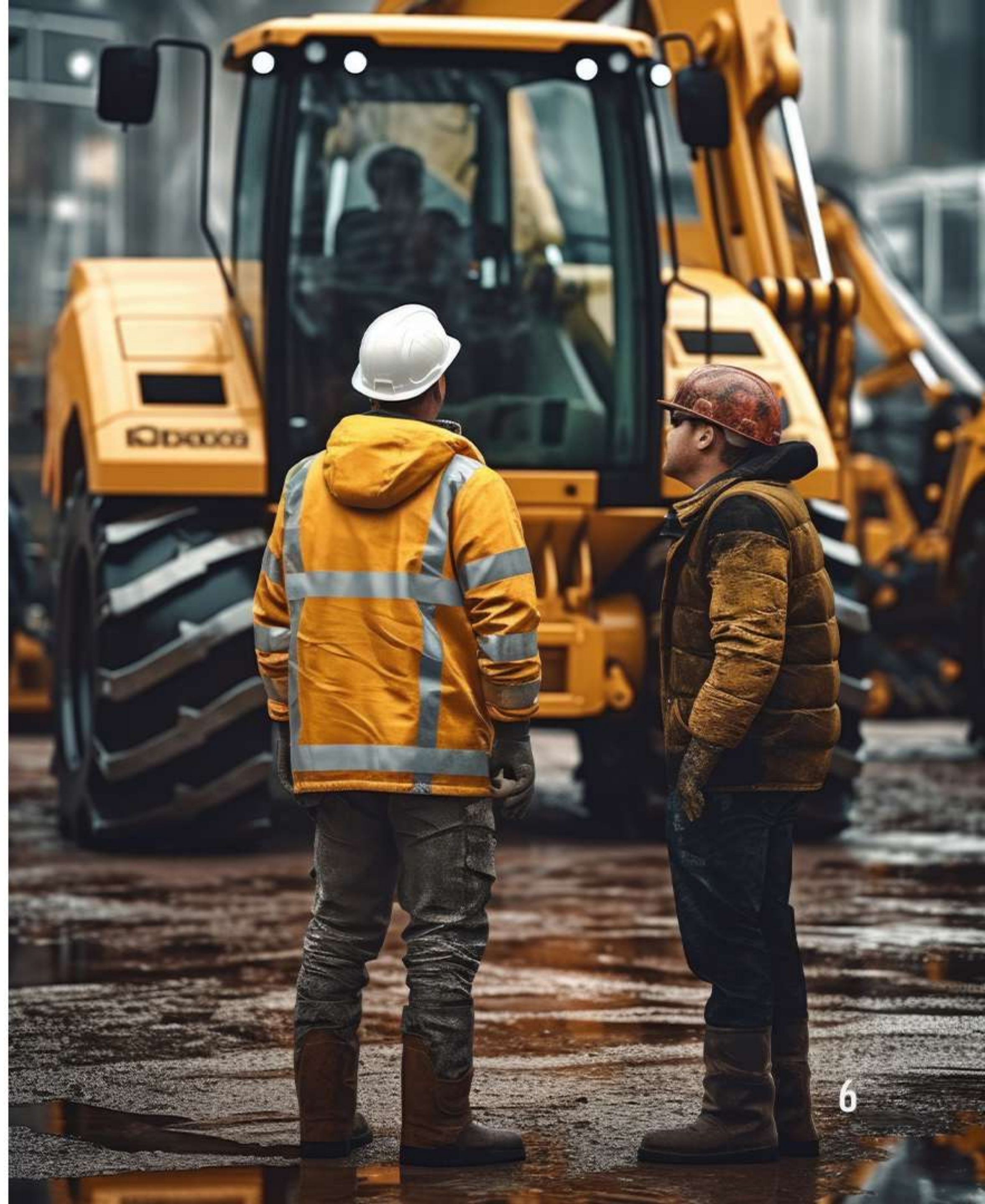
## Reduced Overhead

Outsourcing procurement and dispatching eliminates the need for clients to invest in additional infrastructure, manpower, and resources for these tasks, resulting in reduced overhead costs and overall project cost savings.



## High-Quality Materials

Clients can expect access to high-quality equipment and materials sourced through our network of trusted suppliers, ensuring the reliability and durability of construction materials.



# Our Services

## Rentals

Our product catalog ranges from construction site services and specialized machinery, providing comprehensive coverage for construction needs. Explore a diverse range of equipment categories:



### Aerial Work Platform:

Encompassing both scissor lifts and boom lifts, aerial work platforms provide safe elevated access for various indoor and outdoor tasks.



### Forklifts & Material Handling:

Equipment for transporting and organizing construction materials, including forklifts and cranes.



### Earthmoving Equipment:

Specialized machinery for excavating, grading, and moving soil and other materials on construction sites, such as graders, scrapers, and backhoes.



### Compaction:

Machinery for compacting soil, gravel, or asphalt during construction projects.





### **Generators & Light Towers:**

Power generation solutions and lighting equipment for temporary power supply and illumination on construction sites.



### **Portable Sanitation Services:**

Facilities and services for maintaining cleanliness and waste management on-site.



### **Pipeline Equipment:**

Tools and machinery for pipeline installation and maintenance.



### **Pumps, Tanks & Filtration:**

Rental and servicing of pumps for various construction needs, along with tanks and filtration systems.



### **Trucks & Trailers:**

Transportation solutions for moving equipment, materials, and personnel to and from construction sites.



### **Utility Equipment:**

Tools and equipment for utility infrastructure installation and maintenance, ensuring reliable services for communities.

# Materials

Our materials division offers a diverse selection of construction and building materials tailored to meet the demands of commercial, industrial, and residential projects. From foundational elements to specialized surface treatments, we provide solutions to support every stage of your construction project.



## Ready Mix:

Concrete supply for commercial, industrial, and residential projects, ensuring timely delivery & consistent quality.



## Aggregates:

Base materials essential for roads, parking lots, walkways, & landscaping projects.



## Engineered Fill:

Proven solutions for stable backfilling, adaptable to different soil conditions and excavation projects.



### **Import/Export:**

Efficient logistics for sourcing materials globally, supporting international construction ventures.



### **Asphalt:**

Customizable mixes for durable pavement surfaces in road construction, parking lots, and driveways.



### **Spec Sand:**

Precision-engineered sand for optimal performance in concrete, mortar, and masonry work.



### **HMA (Hot Mix Asphalt):**

High-quality asphalt designed to withstand weather and traffic, ideal for road resurfacing and construction.



### **Cold Patch:**

Quick and durable asphalt repair solution for potholes and pavement damage.



### **Slurry:**

Versatile material for sealing and enhancing surfaces in decorative concrete, pavement preservation, and surface rehabilitation projects.

# Our Strength

## Leading Solution

We offer innovative and strategic services that drive our clients towards success. From project planning to equipment solutions, we're committed to simplifying and enhancing your construction experience.

## Expert Team

Our success is driven by a team of experienced professionals who bring extensive knowledge and expertise to every project.

## National Reach

With a robust network and extensive resources, we proudly offer services across the nation. Our broad reach ensures that no matter where a project is located, we can deliver top-tier solutions and support.

# “More than a Decade Strong”

At National Dispatching, our journey of excellence spans over a decade, marked by the successful completion of 5,000+ projects across a vast network of 5,000+ locations.



**5072+**  
Projects  
Served



**5340+**  
Service  
Locations



**13**  
Years in  
Business

# Our Affiliation and Certifications



# Past Performance


# Your Reliable Partner in Sourcing the Right Equipment



# Why Choose Us?

At National Dispatching, we understand the diverse needs of construction professionals. Whether you're a project manager, procurement manager, logistics coordinator, or civil engineer.

## Expertise

With years of experience in the industry, we bring unparalleled expertise to every project, ensuring high-quality results and customer satisfaction.

## Comprehensive Services

From procurement and dispatching to logistics management and beyond, we offer a wide range of services to support your construction project.

## Reliability

Clients can rely on us to deliver on our promises. We prioritize transparency, integrity, and timely communication throughout the project lifecycle.

## Client-Centric Approach

At the heart of everything we do is our commitment to client satisfaction. We prioritize open communication, responsiveness, and proactive problem-solving to exceed our clients' expectations.



## Effortless Management

Navigate through your orders effortlessly and take complete control of the rental process.



## Comprehensive Control

Enjoy a seamless experience where you can easily track, modify, and optimize your rental orders.



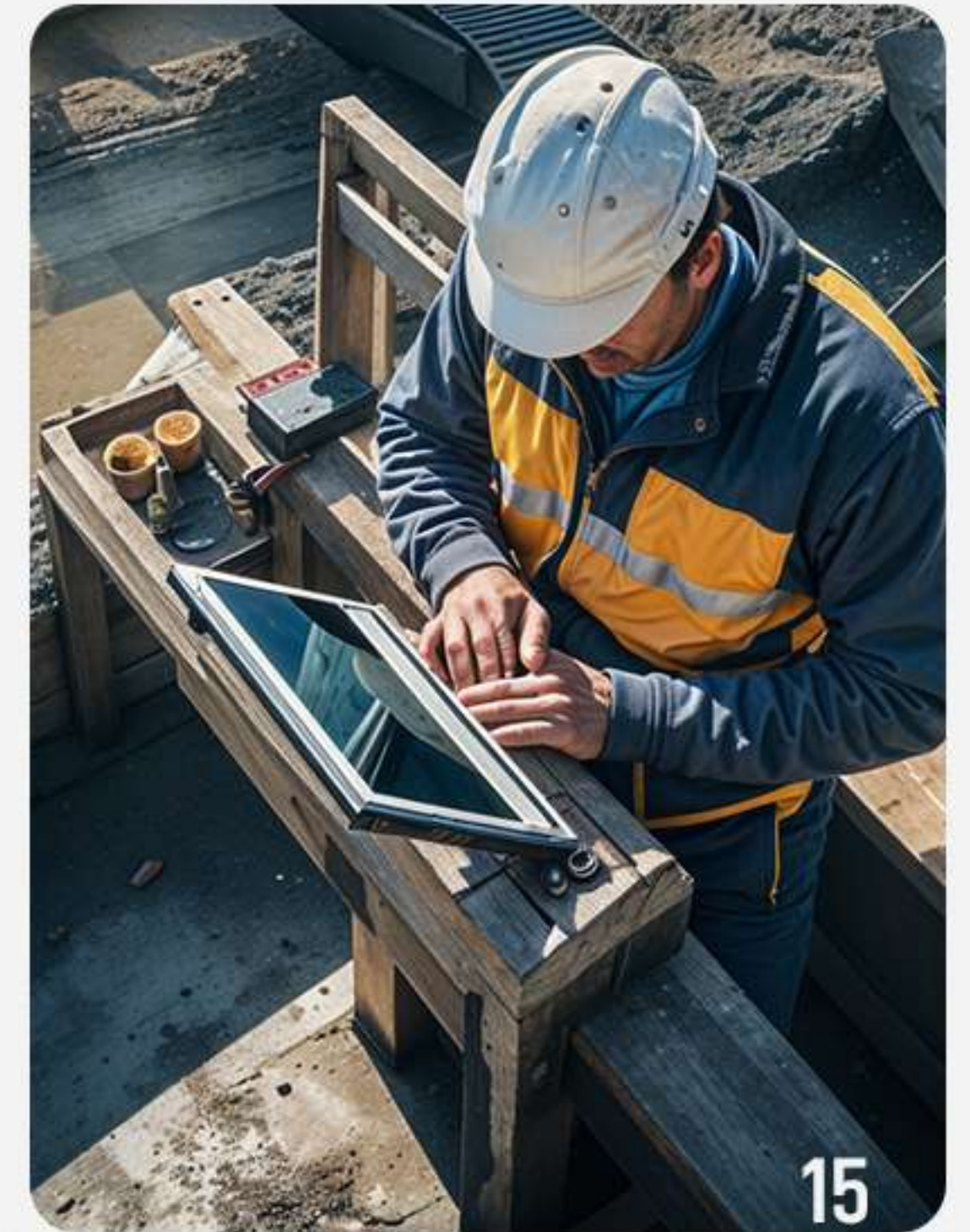
## Time-Saving Convenience

Save time with a quick and efficient rental process. Find and access the equipment you need with just a few clicks.

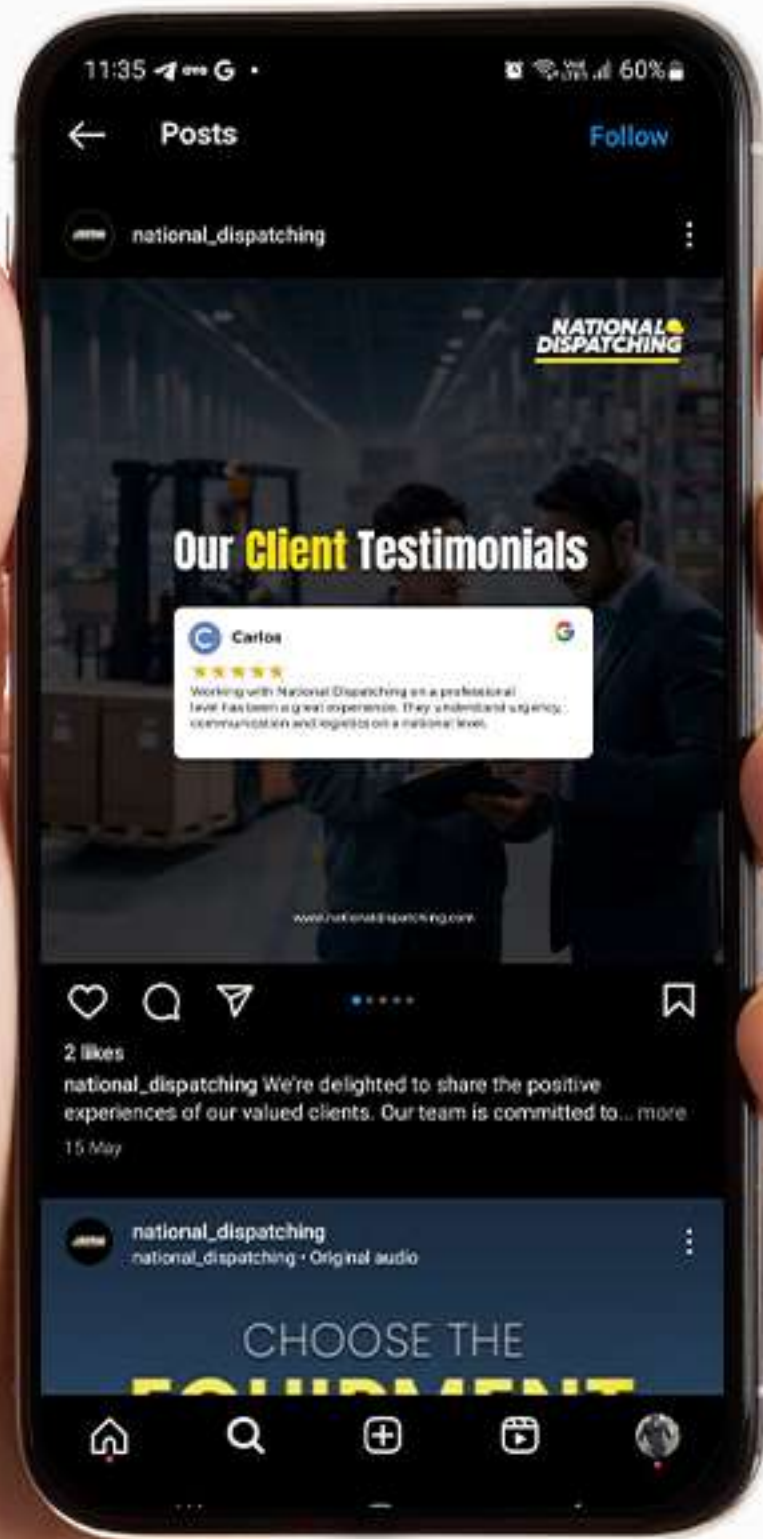


## Easy and Secure Access

Accessing the Customer Portal is both quick and secure. Your username and password are all you need to log in. Rest assured, your account information is treated with the utmost confidentiality.



# Voice of Confidence



**J** **Jorge A Balderas** 

★★★★★

I highly recommend National Dispatching, prompt response, great customer service and equipment, great experience working with guys. Thank you

**C** **Carlos** 

★★★★★

Working with National Dispatching on a professional level has been a great experience. They understand urgency, communication and logistics on a national level.

**A** **Andre Garcia** 

★★★★★

Great customer service & great equipment. Highly recommend.

**C** **Chuck Anderson** 

★★★★★

These guys are the best! Great rates, prompt response, and can find all the equipment. Thanks

What our clients say about us speaks volumes. Hear from Construction Project Managers, Procurement Managers, Logistics and Operations Managers, and Civil Engineers who have experienced the National Dispatching difference.

# Our Operational Zones

We provide service through out the US





**NATIONAL**   
**DISPATCHING**



Central Dispatch : 888.705.5616  
Corporate HQ : 559.274.0300



5125 N. Gates Ave., Ste. 102  
Fresno, CA 93722



[dispatch@nationaldispatching.com](mailto:dispatch@nationaldispatching.com)  
[www.nationaldispatching.com](http://www.nationaldispatching.com)